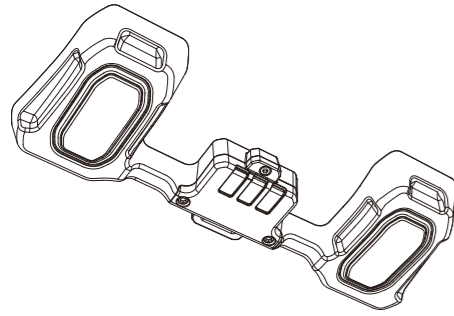


Map lights user's manual



Compatible car models

Jeep Wrangler(JL) : 2017~ (Common to 4 door and 2 door)
SPORT/WILLYS/SAHARA/RUBICON/ALTITUDE/TIDE/392

Jeep WRANGLER (4xe) : 2021~

SAHARA/RUBICON/ALTITUDE

*The product cannot be installed in vehicles with a Sky One-Touch Power Top.

Jeep Gladiator(JT) : 2022~

SPORT/WILLYS/ALTITUDE/RUBICON/OVERLAND/MOJAVE

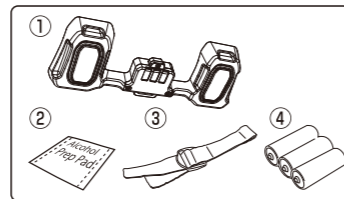
Thank you for your purchase.

Please read this user's manual in its entirety before using the product.

Specialized skills and knowledge are required to properly install this product. If you are not confident that you can complete installation on your own, we recommend hiring a specialist.
* Note to hired installation specialists
Make sure to return this user's manual to the owner after installation.

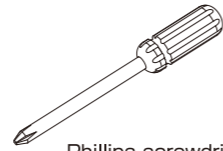
Parts

Please check to make sure that all parts shown below are present.



① Map lights	1 piece
② Degreasing sheet	1 piece
③ Fall prevention belt	1 piece
④ N batteries	3 pieces

Necessary Tools / Batteries to Be Used

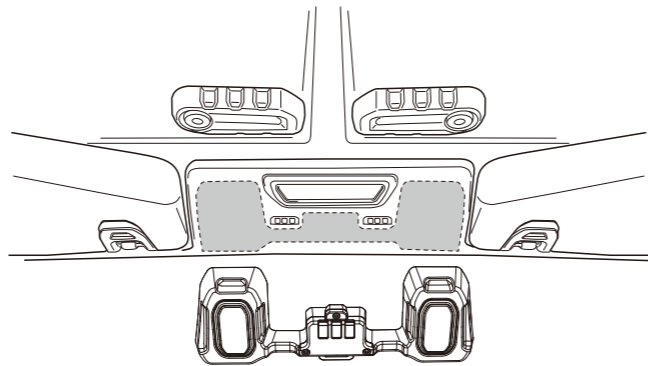


Phillips screwdriver (#2)

Installation positions

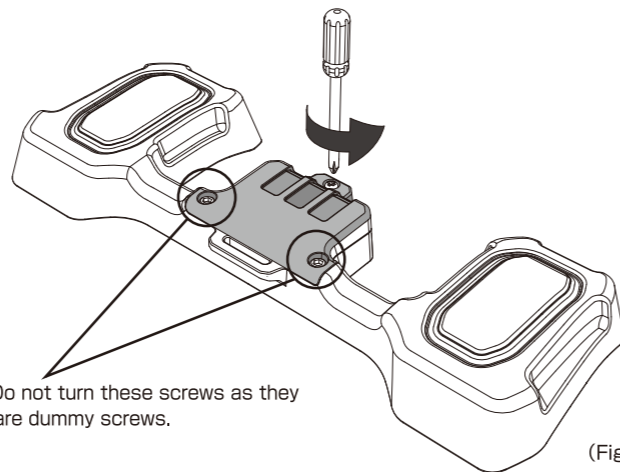
Installation position on a front door for left-hand and right-hand drive.

*The product cannot be installed in vehicles with a Sky One-Touch Power Top. (As of Sep. 2022)



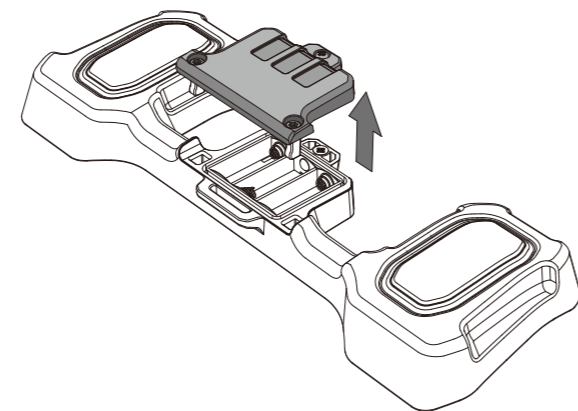
Installation procedure

1. Turn the crosshead screw on the battery cover to the left with the Phillips screwdriver (#2) to loosen the screw. Loosen only this one screw (Figure 1).



(Figure 1)

2. Remove the battery cover (Figure 2).

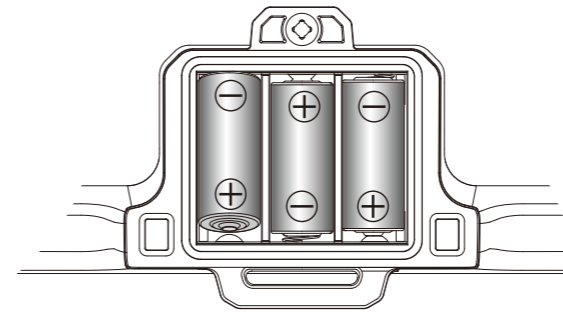


(Figure 2)

*Do not turn these screws as they are dummy screws.

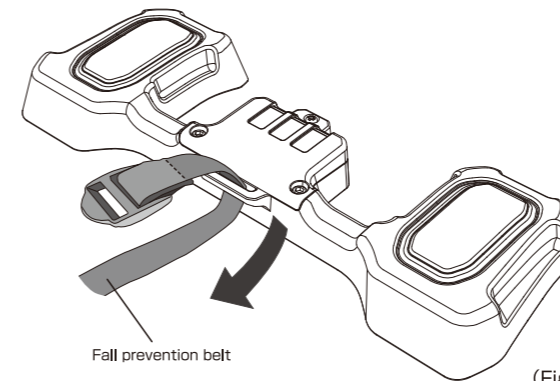
3. As shown in Figure 3, insert 3 × N batteries correctly according to the battery polarities indicated on the main unit. Close the battery cover by following the removal procedure in the reverse order.

*Make sure to use alkaline batteries.



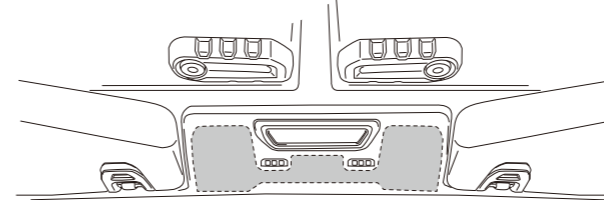
(Figure 3)

4. Feed the fall prevention belt attached to the main unit of the product (Figure 4).



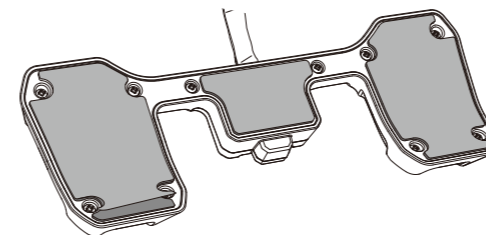
(Figure 4)

5. Simulate the procedure once before installing. After confirming where the product will be affixed, degrease the affixing surface with the included degreasing sheet (Figure 5).



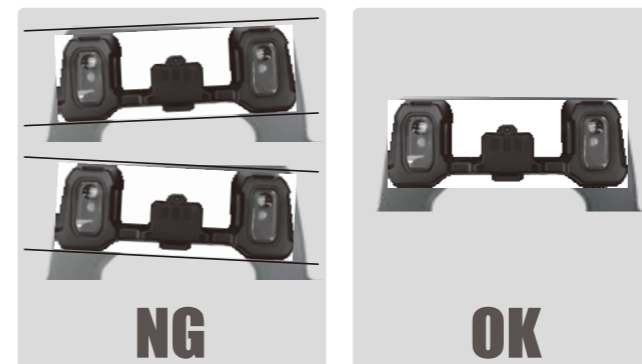
(Figure 5)

6. Peel off the release papers in the 3 locations (Figure 6).



(Figure 6)

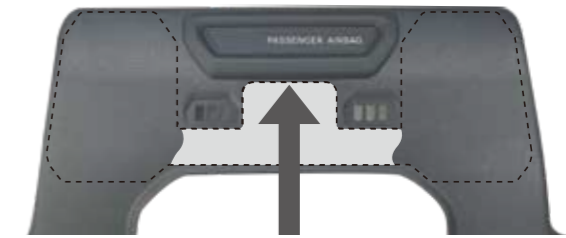
Do not affix the product at an angle. Otherwise may cause the product to fall.



Advice

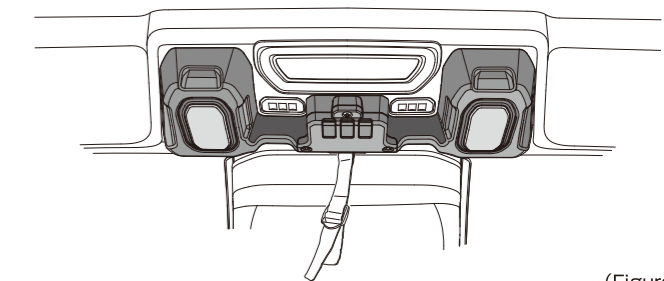
Place the battery box on the lower line of the passenger airbag and affix it so that it fits evenly between the onboard microphones.

*When pressing down hard, press down on the battery box first. Then press the light part and all hard.



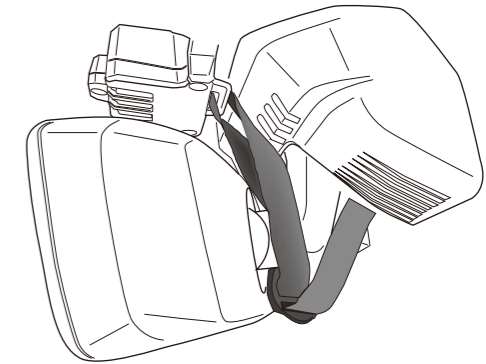
Push the battery box on the edge of the airbag.

7. Affix the product while pressing strongly along the surface to which it is to be affixed. Be aware that the tape is not very adhesive immediately after it has been affixed. The double-sided tape is at its most adhesive 24 hours or more after affixing the product (Figure 7).



(Figure 7)

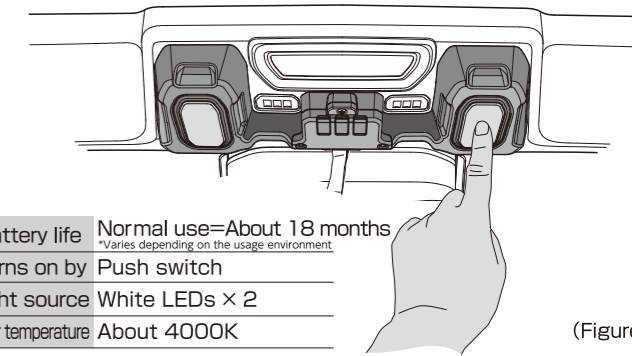
8. Feed the fall prevention belt through the base of the rear-view mirror to fix it in place (Figure 8).



(Figure 8)

How to Use

- Remove the protective film on the lens surface before use.
- Each time you press the lens switch, the light turns on/off repeatedly. As the product is equipped with a function to prevent it from accidentally being left on, it will automatically turn off after 7 minutes (Figure 9).



(Figure 9)

Battery life	Normal use=About 18 months <small>*Varies depending on the usage environment</small>
Turns on by	Push switch
Light source	White LEDs × 2
Color temperature	About 4000K

*Make sure to press the center of the lens switch

Contact Information for Product-related Inquiries

Customer Service Center E-mail : azuto-mk@seikosangyo.co.jp 561-1, Komatsugawa, Yoshikawa-shi, Saitama, 342-0043, Japan azuto.co.jp/en/

SEIKOSANGYO CO., LTD.

* Jeep is a registered trademark of Stellantis N.V.

* AZUTO is a registered trademark of SEIKOSANGYO CO., LTD.

* Planning, Design and Quality control for this product were carried out in Japan.

* Product specifications and appearance are subject to change without prior notice.

* All other product names, etc. used in this document are the trademark or registered trademark of their respective owners.

Main material PC-ABS

GC Made in CHINA